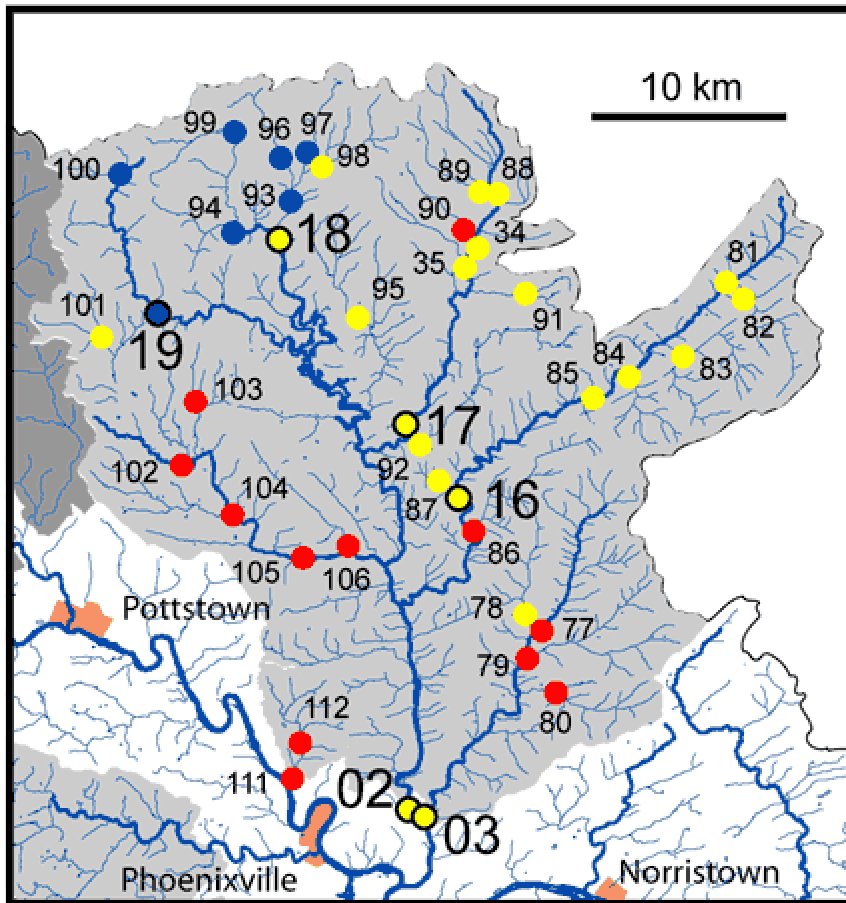


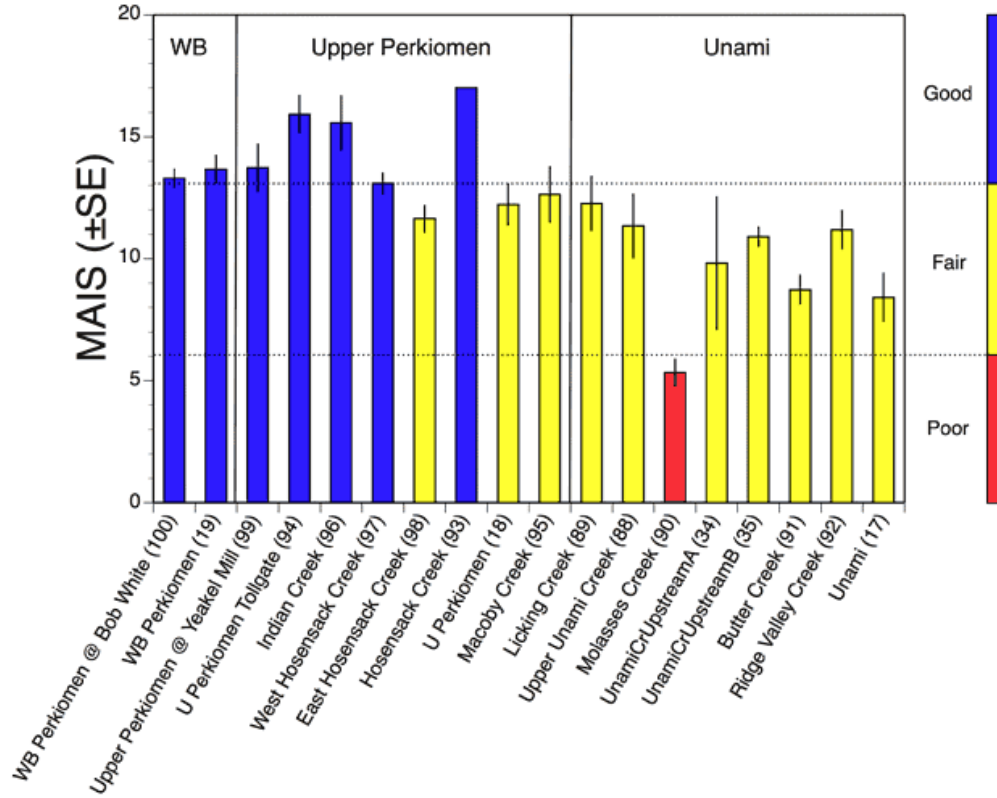
# Perkiomen Creek Basin



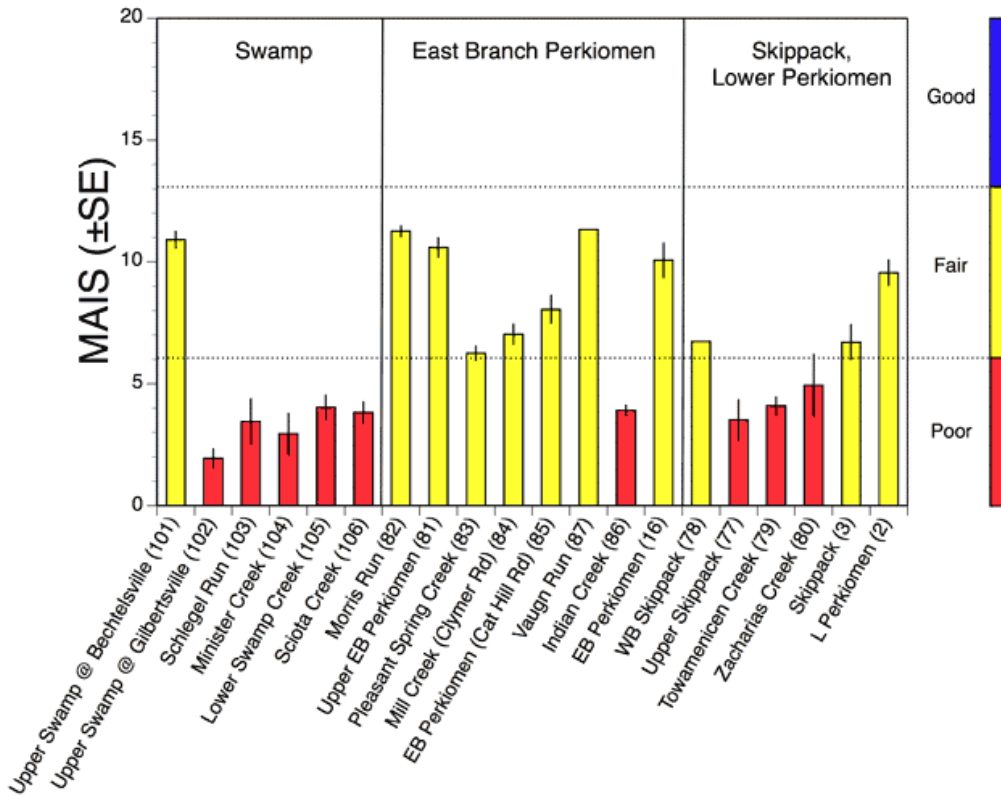
Water Quality:      ● good      ● fair      ● poor

- 2 Perkiomen Creek
- 3 Skippack Creek
- 16 East Branch Perkiomen Creek
- 17 Unami Creek
- 18 Upper Perkiomen Creek
- 19 West Branch Perkiomen
- 34 Unami Creek (upstream A)
- 35 Unami Creek (upstream B)
- 77 Upper Skippack
- 78 West Branch Skippack
- 79 Towamenicen Creek
- 80 Zacharias Creek
- 81 Upper East Branch Perkiomen
- 82 Morris Run
- 83 Pleasant Spring Creek
- 84 Mill Creek
- 85 EB Perkiomen @ Cat Hill Rd.
- 86 Indian Creek
- 87 Vaughn Run
- 88 Upper Unami Creek
- 89 Licking Creek
- 90 Molasses Creek
- 91 Butter Creek
- 92 Ridge Valley Creek
- 93 Hosensack Creek
- 94 Upper Perkiomen @ Tollgate
- 95 Macoby Creek
- 96 Indian Creek
- 97 West Hosensack Creek
- 98 East Hosensack Creek
- 99 Upper Perkiomen @ Yeakel Mill
- 100 WB Perkiomen @ Bob White
- 101 Upper Swamp @ Bechtelsville
- 102 Upper Swamp @ Gilbertsville
- 103 Schlegel Run
- 104 Minister Creek
- 105 Lower Swamp Creek
- 106 Sciota Creek
- 111 Lower Mingo Creek
- 112 Upper Mingo Creek

## Upper Perkiomen Basin



## Lower Perkiomen Basin



**Hosensack Creek – main stem**

Station number	93
description	At Treichlers Road
Latitude (decimal)	40.4384
Longitude (decimal)	-75.5161

**Land Use**

Watershed area (km2)	43
Percent developed	2.0
Percent in agriculture	47.3
Percent forested	46
Percent wetland or water	1.6
Percent in quarries or mining	0.0

**Chemistry**

Nitrate (mg/L)	2.2
Total Dissolved Phosphorus (mg/L)	0.012
pH	8.1
Conductivity ( $\mu$ mhos)	244
Alkalinity (as mg/L CaCO <sub>3</sub> )	53

**Macroinvertebrate Data**

years sampled	2005
MAIS score	17.0
water quality based on MAIS score	good
1st most abundant macroinvertebrate	<u>Chironomidae (midges)</u>
2nd most abundant macroinvertebrate	<u>Tipulidae (crane flies)</u>
3rd most abundant macroinvertebrate	<u>Ephemerellidae (spiny crawler mayflies)</u>
4th most abundant macroinvertebrate	<u>Elmidae (riffle beetles)</u>
5th most abundant macroinvertebrate	<u>Hydropsychidae (common netspinner caddisflies)</u>
6th most abundant macroinvertebrate	<u>Baetidae (small minnow mayflies)</u>
7th most abundant macroinvertebrate	<u>Uenoidae (stonecase caddisflies)</u>
8th most abundant macroinvertebrate	<u>Oligochaeta (aquatic earthworms)</u>
9th most abundant macroinvertebrate	<u>Psephenidae (water penny beetles)</u>
10th most abundant macroinvertebrate	<u>Planariidae (flatworms)</u>

### West Hosensack Creek

Station number	97
description	At Palm Road
Latitude (decimal)	40.4583
Longitude (decimal)	-75.5047

### Land Use

Watershed area (km <sup>2</sup> )	10
Percent developed	2.4
Percent in agriculture	46.4
Percent forested	45
Percent wetland or water	2.0
Percent in quarries or mining	0.0

### Chemistry

Nitrate (mg/L)	2.4
Total Dissolved Phosphorus (mg/L)	0.015
pH	8.1
Conductivity (µmhos)	298
Alkalinity (as mg/L CaCO <sub>3</sub> )	53

### Macroinvertebrate Data

years sampled	2006
MAIS score	13.1
water quality based on MAIS score	good
1st most abundant macroinvertebrate	<u>Ephemere</u> llidae (spiny crawler mayflies)
2nd most abundant macroinvertebrate	<u>Chironom</u> idae (midges)

3rd most abundant macroinvertebrate	<u>Elmidae (riffle beetles)</u>
4th most abundant macroinvertebrate	<u>Hydropsychidae (common netspinner caddisflies)</u>
5th most abundant macroinvertebrate	<u>Oligochaeta (aquatic earthworms)</u>
6th most abundant macroinvertebrate	<u>Tipulidae (crane flies)</u>
7th most abundant macroinvertebrate	<u>Nemouridae (nemourid stoneflies)</u>
8th most abundant macroinvertebrate	<u>Simuliidae (black flies)</u>
9th most abundant macroinvertebrate	<u>Empididae (aquatic dance flies)</u>
10th most abundant macroinvertebrate	<u>Plecoptera (unidentified stoneflies)</u>

<b>East Hosensack Creek</b>	
Station number	98
description	Limeport Pike and Shultz Bridge Road
Latitude (decimal)	40.4547
Longitude (decimal)	-75.4992
<b>Land Use</b>	
Watershed area (km2)	16
Percent developed	2.1
Percent in agriculture	51.9
Percent forested	42

Percent wetland or water	0.4
--------------------------	-----

Percent in quarries or mining	0.0
-------------------------------	-----

**Chemistry**

Nitrate (mg/L)	2.8
----------------	-----

Total Dissolved Phosphorus (mg/L)	0.012
-----------------------------------	-------

pH	8.5
----	-----

Conductivity (µmhos)	323
----------------------	-----

Alkalinity (as mg/L CaCO <sub>3</sub> )	84
---	----

**Macroinvertebrate Data**

years sampled	2006
---------------	------

MAIS score	11.6
------------	------

water quality based on MAIS score	fair
-----------------------------------	------

1st most abundant macroinvertebrate	<u>Chironomidae (midges)</u>
-------------------------------------	------------------------------

2nd most abundant macroinvertebrate	<u>Ephemerellidae (spiny crawler mayflies)</u>
-------------------------------------	--

3rd most abundant macroinvertebrate	<u>Elmidae (riffle beetles)</u>
-------------------------------------	---------------------------------

4th most abundant macroinvertebrate	<u>Hydropsychidae (common netspinner caddisflies)</u>
-------------------------------------	---

5th most abundant macroinvertebrate	<u>Oligochaeta (aquatic earthworms)</u>
-------------------------------------	---

6th most abundant macroinvertebrate	<u>Helicopsychidae (snailcase caddisflies)</u>
-------------------------------------	--

7th most abundant macroinvertebrate	<u>Tipulidae (crane flies)</u>
-------------------------------------	--------------------------------

8th most abundant macroinvertebrate **Empididae (aquatic dance flies)**

9th most abundant macroinvertebrate **Philopotamidae (fingernet caddisflies)**

10th most abundant macroinvertebrate **Nematoda (nematodes)**