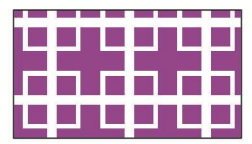


# Upper Milford Township Zoning Map

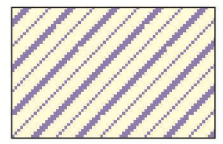
# Appendix B

Adopted by the Board of Supervisors of Upper Milford Township by Resolution No. 175 on May 21, 2026.

Chairperson \_\_\_\_\_ Date \_\_\_\_\_  
 Township Secretary \_\_\_\_\_ Date \_\_\_\_\_



**CZAMB OVERLAY**  
 Coordinated Zoning  
 Along Municipal  
 Borders  
 Adopted 8/18/22



Conservation/Open  
 Space Development Option  
 Overlay District  
 Adopted 9/6/18

- Agricultural Conservation
- Conservation
- Rural Agricultural
- Rural Suburban Residential
- Suburban Residential
- Village Residential
- Village Commercial
- Commercial
- Industrial

**Note:**  
 A = 700' from existing lot line.

\*Municipal boundaries may vary between Mast Survey line & Lehigh County Tax Map line



0 1,000 2,000 3,000 4,000 Feet

Source of Base Information : Lehigh County Mapping Office, 2007.

