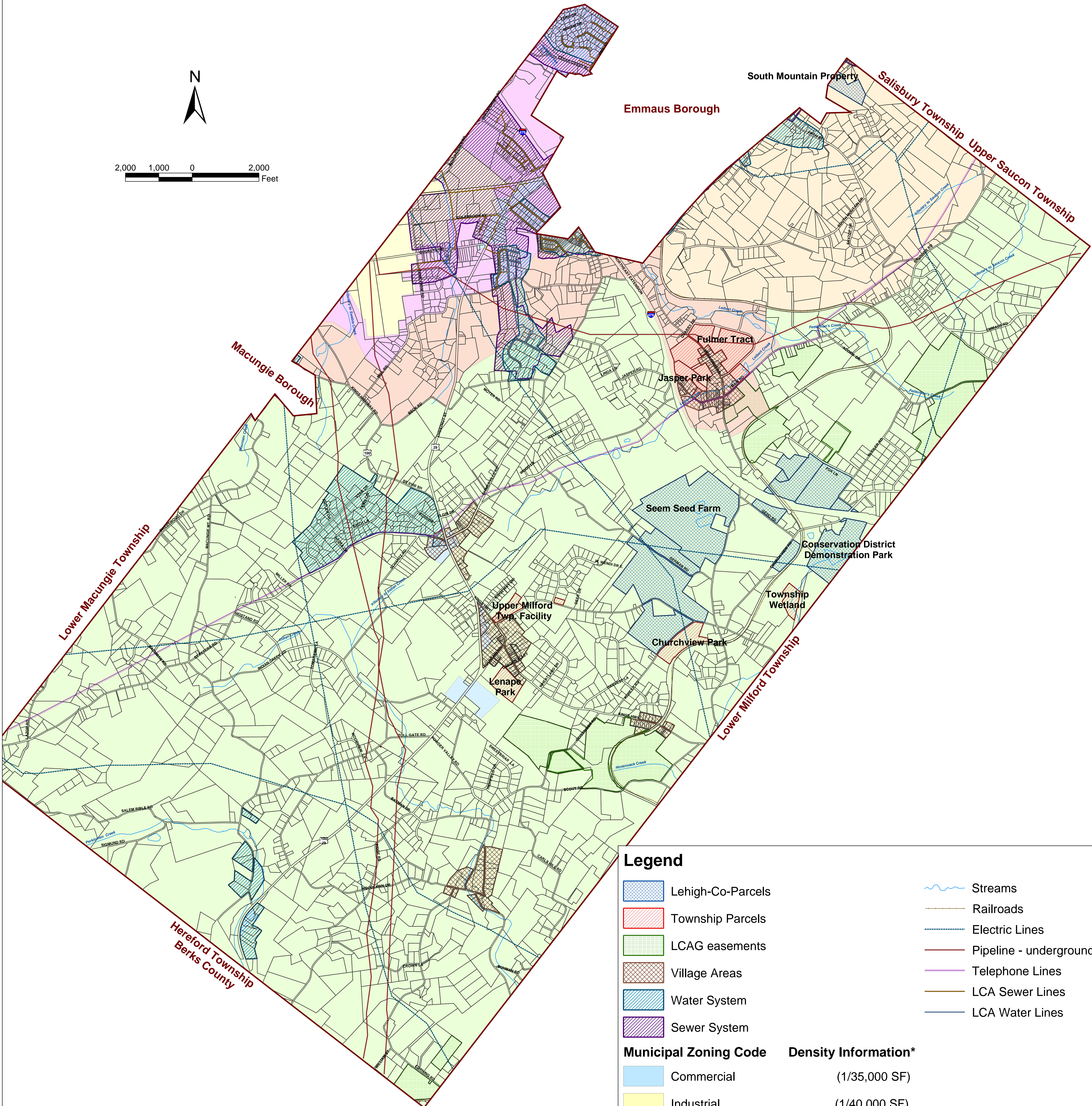
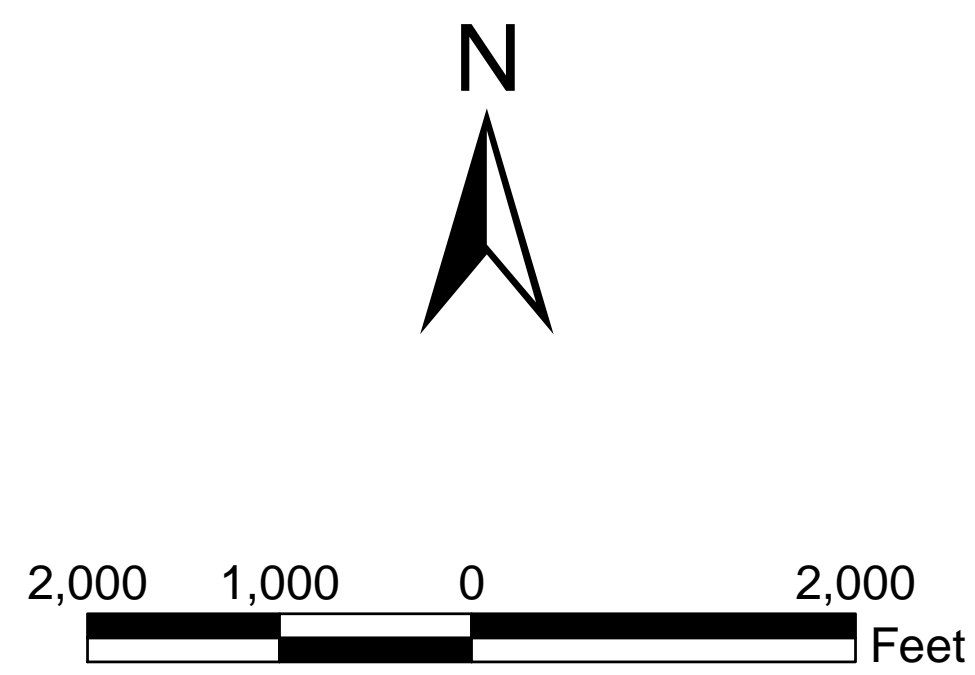
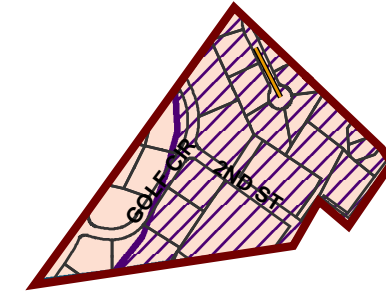


# ZONING LANDUSE

## Upper Milford Township



### Legend

- Lehigh-Co-Parcels
- Township Parcels
- LCAG easements
- Village Areas
- Water System
- Sewer System
- Streams
- Railroads
- Electric Lines
- Pipeline - underground
- Telephone Lines
- LCA Sewer Lines
- LCA Water Lines

### Municipal Zoning Code      Density Information\*

	Commercial	(1/35,000 SF)
	Industrial	(1/40,000 SF)
	Rural Agricultural	(1/50,000 SF)
	Rural Suburban Residential	(1/40,000 SF)
	South Mountain Conservation	(1/87,120 SF)
	Suburban Residential	(1/40,000 SF)

\* minimum lot area per dwelling unit for residential uses as per 1992 zoning ordinance.