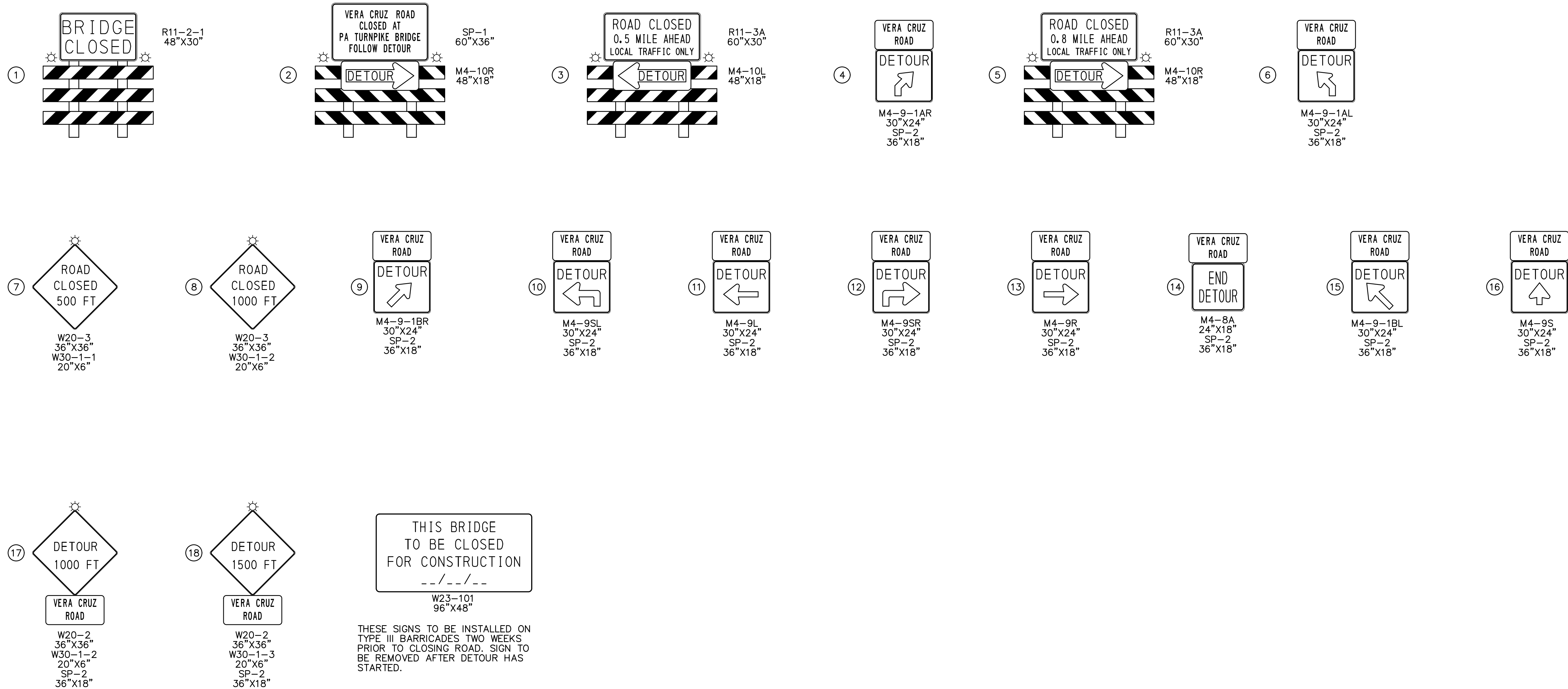


NOTE: FOR SIGNS REQUIRED IN THIS AREA, SEE DETAIL A (THIS SHEET)



- LEGEND**
- WORK AREA
 - STATE ROADS
 - TOWNSHIP/OTHER ROADS
 - DETOUR SIGN
 - DETOUR ROUTE
 - RAILROAD
 - TYPE III BARRICADE AND SIGN
- DETOUR PLAN**
 DETOUR LENGTH = 7.8 MILES
 * PROVIDE TYPE III BARRICADES TO CLOSE ROAD COMPLETELY

	PREPARED BY: GIBSON-THOMAS ENGINEERING CO., INC. 3352 GETTYSBURG ROAD SUITE #201 CAMP HILL, PA 17011		NO. REVISIONS DATE APPR.	WBS NO. A-048.00T001-3-03	REPLACEMENT OF BRIDGE NO. NB-314 AT MILEPOST A-49.67	TRAFFIC CONTROL PLAN SR 2027 (VERA CRUZ ROAD)
	PREPARED FOR: THE PENNSYLVANIA TURNPIKE COMMISSION		NETWORK NUMBER: 7009280 FILE NAME: PTC1TCdp001_GTE_SR_2027.dgn DRAWING TYPE: 4A STRUCTURE NUMBER: NB-314	SCALE: 0 800 1600 FEET 		



	PREPARED BY: GIBSON-THOMAS ENGINEERING CO., INC. 3352 GETTYSBURG ROAD SUITE #201 CAMP HILL, PA 17011		WBS NO. A-048.00T001-3-03	REPLACEMENT OF BRIDGE NO. NB-314 AT MILEPOST A-49.67	TRAFFIC CONTROL PLAN SR 2027 (VERA CRUZ ROAD)	
	PREPARED FOR: THE PENNSYLVANIA TURNPIKE COMMISSION		NETWORK NUMBER: 7009280 FILE NAME: PTC1TCdp002_GTE_SR-2027.dgn DRAWING TYPE: 4A STRUCTURE NUMBER: NB-314			DISTRICT: 5 COUNTY: LEHIGH
	NO. REVISIONS DATE APPR.		SCALE: NOT TO SCALE			TOWNSHIP / BOROUGH: UPPER MILFORD TOWNSHIP
						DRAWING: 3 OF 18 SHEET: 3 OF 18